

Massachusetts Mutual Life Ins

Group Affiliation: Massachusetts Mutual Life Grp
Address: 1295 State Street
 Springfield MA 01111
Phone: 413-788-8411

Domicile: MA
NAIC Number: 65935
Year Established: 1851
Company Type: Mutual

Ratings

A.M. Best Company(Best's Rating, 15 ratings) A++ (1)
 Standard & Poor's(Fin. Strength, 20 ratings) AA+ (2)
 Moody's(Fin. Strength, 21 ratings) Aa2 (3)
 Fitch Ratings(Fin. Strength, 21 ratings) AA+ (2)
 Weiss(Safety Rating, 16 ratings) A- (3)
 Comdex Ranking(Percentile in Rated Companies) 98

Assets & Liabilities

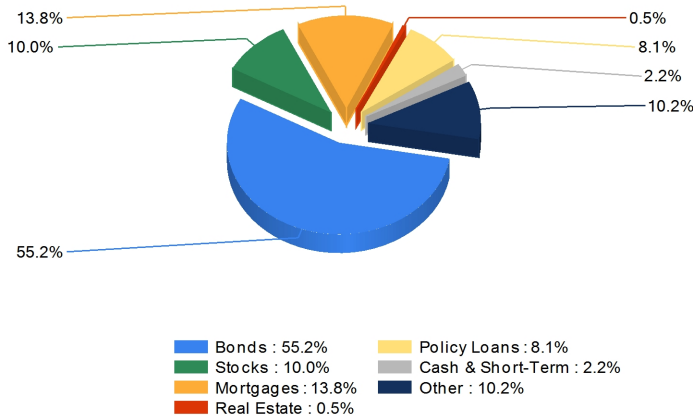
Total Admitted Assets 240,063,222
 Total Liabilities 224,358,005
 Separate Accounts 69,162,282
 Total Surplus & AVR 18,912,286
 As % of General Account Assets 11.1%

Invested Asset Distribution

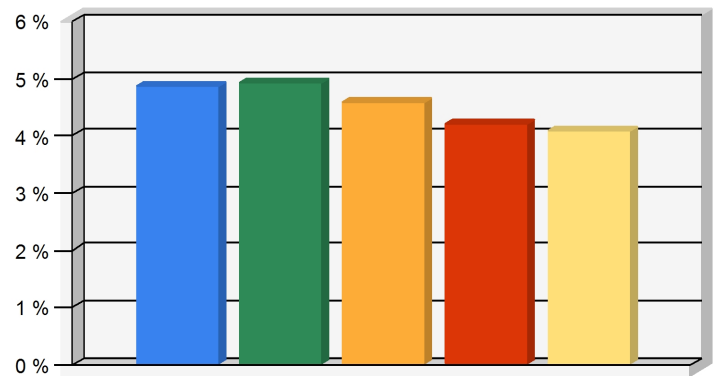
Total Invested Assets 163,921,158

5 Year Investment Yields

5 Year Average 4.52%



Distribution of the invested assets



Net yield on mean invested assets

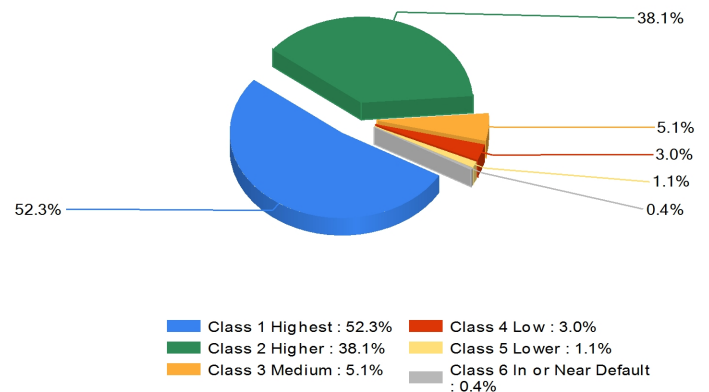
Non-Performing Assets

Bonds In or Near Default 2.0%
 Problem Mortgages 0.0%
 Real Estate Acquired by Foreclosure 0.0%
 Total Non-Performing Assets/Surplus & AVR 2.0%
 As a Percent of Invested Assets 0.2%

Income & Earnings

Total Income 25,452,541
 Net Premiums Written 17,461,647
 Earnings Before Dividends and Taxes 1,723,652
 Net Operating Earnings 474,128

Bond Quality



Distribution of bond classes

A Best's Financial Strength Rating opinion addresses the relative ability of an insurer to meet its ongoing insurance obligations. It is not a warranty of a company's financial strength and ability to meet its obligations to policyholders. View our Important Notice: Best's Credit Ratings for a disclaimer notice and complete details at <http://www.ambest.com/ratings/notice>.

Data for Year-End 2017 from the life insurance companies' statutory annual statements. All dollar amounts are in thousands. All ratings shown are current as of April 15, 2019.

Presented by: Charles Krugh, Doctor Disability Insurance, 1271 Puerta Del Sol, San Clemente, CA 92673 Phone: 866-899-7318 Email: Info@DoctorDisability.com